



Oscillating Saws and Power Tools

Content

Introduction	3
ELECTRONIC POWER High Quality Oscillating Plaster Saw	4
EASY POWER One Handed Oscillating Plaster Saw	5
SLIM POWER High Quality Oscillating Plaster Saw	6
VACUUM DUST CLEANER	7
AUTOPSY High Quality Oscillating Saw	8
SAW BLADES and ACCESSORIES	9
AUTOPSY TRIANGLE High Quality Oscillating Saw	10
AUTOPSY TRIANGLE Saw Blades and Accessories	11
POWER TOOLS Handpieces	13
POWER TOOLS Accessories	14
POWER TOOLS Sternum Saw Set, Accessories	15
POWER TOOLS Attachment and Accessories	16
ACETABULUM Acetabulum Reamer System and Accessories	17
SURGICAL SAW BLADES	18



INSTRUMENTE



THE GUIDING PRINCIPLE

CM was established in 1993 purely as a distributor, but a decision was reached in 2002 to concentrate exclusively on the production of its own Instruments and their export on an international level. We have continued to grow since then, experiencing many changes along the way. However, our expectations of ourselves have remained the same: maximum quality standards and innovative products manufactured to specification. Reliable just-in-time delivery at a price/performance ratio that begs comparison. Customer satisfaction is both the driving force behind our success and a stimulus we feel we have an obligation to embrace.



THE PRODUCTION

CM Instruments have established themselves on a global level, and this success is the result of consistent and continuous production optimising processes. Each company division is certified in compliance with DIN EN ISO 13485:2003 and DIN ISO 9001:2000 standard. The latest machines, systematic quality Management and our close relationship with customers are your guarantee of peace of mind when treating patients.

THE VARIETY

Our product spectrum covers a variety of requirements in specialised medical sectors, ranging from aneurysm clips for neurosurgery to dental Instruments. You can rely on us to produce the optimum solution for every application.



FOCUS IN DETAIL

Take some time to examine our comprehensive range in detail, and you too will be convinced of the advantages embodied in our products. Detailed brochures are available which can be ordered or downloaded from the internet: surgical Instruments, dental Instruments, cranio maxillo/facial titan, osteosynthesis, cardiovascular Instruments, laryngoscopes, endoscopes, laparoscopy, aneurysm clips, Aluminium rib spreaders, diagnostics, hospital furniture and equipment, hollow ware, sterilization Containers



ELECTRONIC POWER
High Quality Oscillating Plaster Saw

DA-020-20
230 Volt

DA-020-10
110 Volt

- Fully automatic load-compensation over the whole oscillations field.
- Slim and silent motor producing only 52 – 77 dB(A) depending on the selected oscillations.
- Latest electronic system with various protection and security functions.
- Special positioning of the motor, protected by plaster dust.
- Robust construction ensuring highest load capacity during continuous operation.
- Safety ON / OFF switch.
- Vibrations- and maintenance-free.
- 1 year guarantee.
- Radio and TV suppressed.
- Complete with 2 saw blades $\varnothing 50$ mm **DA-120-50**, $\varnothing 65$ mm **DA-120-65**, a pair of wrenches **DA-120-02** and operating manual.

Technical Data:

- 230 V~, 50 Hz or 110 Volt~, 60 Hz.
- 500 Watt
- 6,500 up to 24,000 oscillations, infinitely variable.
- 5 meter cable with EU-plug (230 Volt version) or 3 meter cable with US-plug (110 Volt version).
- Weighs only 1.25 kg without cable (1.5 kg with cable).
- Double protection isolation according to class II, medical use of type BF.
- CE conformity.
- EN 60601-1, EN 60601-1-2, IEC 60601-1, IEC 60601-1-2 inspected.

Plastic Box with inlay **DA-020-98**
(available separately)





INSTRUMENTE

EASY POWER One Handed Oscillating Plaster Saw

DA-320-23
230 Volt

DA-229-11
110 Volt

- Excellent construction of this ergonomically shaped high performance saw offers optimal single handed handling.
- Plaster and plastic bandages can be opened safely and precisely.
- Saw works especially quiet and is largely maintenance free.
- Electronic setting of the number of the revolutions allows the oscillation of the saw blade to be set exactly.
- Latest electronic system with various protection and security functions.
- 1 year guarantee.
- Radio and TV suppressed
- Complete with 2 saw blades $\varnothing 65$ mm **DA-120-65**, $\varnothing 65$ mm for Synthetic dressings **DA-121-65**, one hexagonal key No.5 **DA-325-05** and operating manual.



Technical Data:

- 230 V~, 50 Hz or 110 Volt~, 60 Hz.
- 180 Watt.
- 12,000 to 21,000 oscillations, infinitely variable.
- 5 meter cable with EU-plug.
- Double protection isolation according to class II.
- Weighs only 1.1 kg.
- CE conformity
- EN 60601-1, EN 60601-1-2, IEC 60601-1, IEC 60601-1-2 inspected.

Plastic Box with inlay **DA-020-98**
(available separately)

SLIM POWER
High Quality Oscillating Plaster Saw

DA-420-00
230 Volt

DA-420-01
110 Volt

- Easy handling by very small diameter (approx. 50.5 mm).
- Slim and silent motor producing 50 – 72 dB(A) depending on the selected oscillations.
- Latest electronic system with various protection and security functions.
- Special positioning of the motor, protected by plaster dust.
- Robust construction ensuring highest load capacity during continuous operation
- Safety ON / OFF switch.
- Vibrations- and maintenance-free
- 1 year guarantee.
- Radio and TV suppressed.
- Complete with 2 saw blades $\varnothing 50$ mm **DA-120-50**, $\varnothing 65$ mm **DA-120-65**, a pair of wrenches **DA-120-02** and operating manual.

Technical Data:

- 230 V~, 50 Hz or 110 Volt~, 60 Hz.
- 210 Watt.
- 10,000 up to 19,000 oscillations, infinitely variable.
- 3 meter cable with EU-plug.
- Weighs only 0,97 kg without cable (1,1 kg with cable).
- Double protection isolation according to class II, medical use of type BF.
- CE conformity.
- EN 60601-1, EN 60601-1-2, IEC 60601-1, IEC 60601-1-2 inspected.

Plastic Box with inlay **DA-020-98**
(available separately)





INSTRUMENTE

VACUUM DUST CLEANER High Quality Oscillating Plaster Saw with Vacuum „ELECTRONIC POWER“

DA-222-22
230 Volt

DA-222-11
110 Volt

- The cleaner automatically turns ON/OFF along with the plaster saw.
- After turning the plaster saw OFF, the cleaner turns off 6 – 10 sec. later, hence cleaning the whole system.
- Robust construction ensuring highest load capacity during continous operation.
- Due to multiple filters air flow is restricted to 40 lt./sec.
- Noise level 63 – 69 dB(A).
- Antistatic cleaner tube.
- 1 year garantuee.
- Radio and TV sup-pressed.
- Complete with Plaster Saw “ELECTRONIC POWER”, 2 saw blades $\varnothing 50$ mm
DA-120-50, $\varnothing 65$ mm
DA-120-65, a pair of wrenches **DA-120-02** and operating manual.

Technical Data:

- 230 V~, 50 Hz or 110 Volt~, 60 Hz.
- 500 – 1,200 watt.
- Continuous power output max. 1,200 watt, max power output 1,450 watt PT.
- Max. vacuum 2,100mm/H₂O vacuum motor, max. vacuum 1,900 mm/H₂O vacuum machine.
- 3 meter cable with EU-plug.
- CE conformity.



AUTOPSY
High Quality Oscillating Saw
„ELECTRONIC POWER“

DD-430-00
230 Volt

DD-430-01
110 Volt

- The autopsy saw “ELECTRONIC POWER” is used in pathology departments for autopsy (post-mortem).
- Saw head (driving gear) can be removed and steam sterilized.
- Fully automatic load-compensation over the whole oscillations field.
- Slim and silent motor producing only 52 – 77 dB(A) depending on the selected oscillations.
- Safety ON / OFF switch.
- Vibrations- and maintenance-free
- 1 year guarantee.
- Radio and TV suppressed
- Complete with autopsy saw blade $\varnothing 65$ mm **DA-123-65**, autopsy saw blade $\varnothing 65$ mm **DA-120-65**, autopsy saw blade $\varnothing 50$ mm **DA-120-50**, a pair of wrenches **DA-120-02**, a hexagonal key **DD-431-98** and operating manual.

Technical Data:

- 230 V~, 50 Hz or 110 Volt~, 60 Hz.
- 500 Watt
- 6,500 up to 24,000 oscillations, infinitely variable.
- 5 meter cable with EU-plug (230 Volt version) or 3 meter cable with US-plug (110 Volt version).
- Weighs only 1.25 kg without cable (1.5 kg with cable).
- Double protection isolation according to class II, medical use of type BF.
- CE conformity.
- EN 60601-1, EN 60601-1-2, IEC 60601-1, IEC 60601-1-2 inspected.

Plastic Box with inlay DA-020-98
(available separately)



SAW BLADES

Diameter/
Cutting Edge
mm

For normal
plaster
and
autopsy

Only for
synthetic
casts

PTFE
(non-
stick)
coated



45
50
65

DA-120-45
DA-120-50
DA-120-65

DA-121-45
DA-121-50
DA-121-65

DA-122-
DA-122-
DA-122-



65
post mortem

DA-123-65

DA-124-65



65
segmented

DA-125-65

DA-126-65



8
Depth saw

DA-127-17

DA-127-18



20

DA-127-06

DA-127-11



Excentric disc to limit depth of cut
DA-128-17

Important: To avoid cross-contamination, please do not reuse saw blades in forensic autopsies or tissue/organ transplantation operations.

AUTOPSY TRIANGLE
High Quality Oscillating Saw
„ELECTRONIC POWER“ with Special Triangular Chuck

DD-432-00
230 Volt

DD-432-01
110 Volt

- The autopsy saw “ELECTRONIC POWER” is used in pathology departments for autopsy (post-mortem).
- Saw head (driving gear) can be removed and steam sterilized.
- Special triangular chuck for a lot of arbors with different saw blades.
- Fully automatic load-compensation over the whole oscillations field.
- Slim and silent motor producing only 52 – 77 dB(A) depending on the selected oscillations.
- Safety ON / OFF switch.
- Vibrations- and maintenance-free
- 1 year guarantee.
- Radio and TV suppressed
- Complete with autopsy saw blade \varnothing 65 mm **DA-123-65**, autopsy saw blade \varnothing 65 mm **DA-120-65**, autopsy saw blade \varnothing 50 mm **DA-120-50**, a short shaft **DD-433-20**, a key #14 **DD-431-97**, a hexagonal key **DD-431-98** and operating manual.

Technical Data:

- 230 V~, 50 Hz or 110 Volt~, 60 Hz.
- 500 Watt
- 6,500 up to 24,000 oscillations, infinitely variable.
- 5 meter cable with EU-plug (230 Volt version) or 3 meter cable with US-plug (110 Volt version).
- Weighs only 1.25 kg without cable (1.5 kg with cable).
- Double protection isolation according to class II, medical use of type BF.
- CE conformity.
- EN 60601-1, EN 60601-1-2, IEC 60601-1, IEC 60601-1-2 inspected.

Plastic Box with inlay **DA-020-98**
(available separately)





AUTOPSY TRIANGLE Post mortem Saw blades and Accessories

DD-433-00

Saw blade, autopsy $\varnothing 65$ mm **DA-123-65**,
with short triangular shaft **DD-433-20**



DD-433-02

Saw blade depth, 20 mm **DA-127-06**,
with short triangular shaft **DD-433-20**



DD-433-04

Saw blade depth, 8 mm **DA-127-17**,
with short triangular shaft **DD-433-20**

DD-433-10

Double saw blades,
round $\varnothing 50$ mm **DA-120-50** and **DD-432-12**,
with long triangular shaft **DD-433-21**



DD-433-11

Saw blade, round $\varnothing 50$ mm **DA-120-50**,
with long triangular shaft **DD-433-20**



DD-433-12

Adjustable saw blade,
round $\varnothing 50$ mm, for double saw

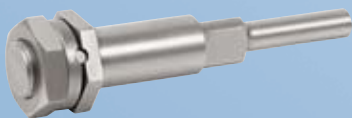


AUTOPSY TRIANGLE
Post mortem Saw blades
and Accessories

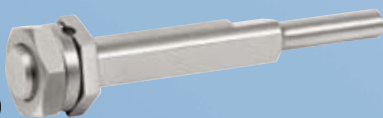
DD-433-13
Saw blade, round $\varnothing 65$ mm **DA-120-65**,
with eccentric disk **DA-128-17**, and short
triangular shaft **DD-433-20**



DD-433-20
Triangular shaft, short, 39 mm



DD-433-21
Triangular shaft, long,
58 mm, (only for double saw)



DD-433-30
Saw blade, round $\varnothing 65$ mm **DA-120-65**,
with short triangular shaft **DD-433-20**



DD-433-32
Saw blade, segmented $\varnothing 65$ mm **DA-125-65**,
with short triangular shaft **DD-433-20**

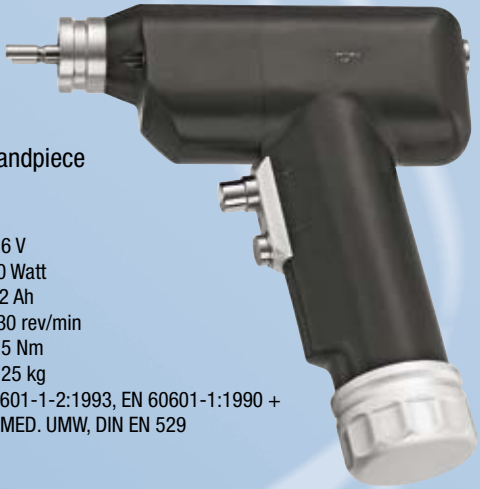


POWER TOOLS

DD-231-07 Battery-driven Handpiece

Technical Data:

Voltage: 9.6 V
 Motor output: 70 Watt
 Rated cap. of batt: 1.2 Ah
 Speed: 630 rev/min
 Max.torque: 6.5 Nm
 Weight incl. batt: 1.25 kg
 CE conformity, EN 60601-1-2:1993, EN 60601-1:1990 +
 A1:1993 + A2:1995, MED. UMW, DIN EN 529



DD-236-05 Air-driven Handpiece

Technical Data:

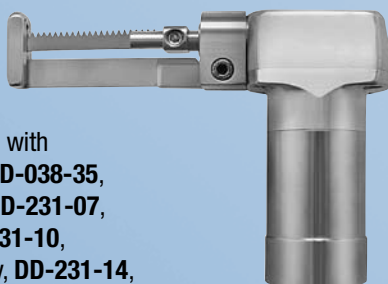
Speed: 600 rev/min
 Pressure: 6.5 bar

DD-236-30 Tube (replacement), 3 mm

DD-236-50 Tube (replacement), 5 mm



POWER TOOLS
Sternum Saw / Accessoires



DD-231-35

Sternum Saw Set complete with sternum saw attachment **DD-038-35**, battery-driven handpiece **DD-231-07**, battery, 9.6 V, 1.2 Ah, **DD-231-10**, charger, 230 V, for 1 battery, **DD-231-14**, sterilising funnel for battery, **DD-231-11**

DD-231-10

Rechargeable battery 9.6 V, 1.2 Ah, Ni MH (Nickel Metal Hybride)



Technical Data:

Typ: VA AA

Under normal levels: 1.2V - 1,250 mA, 125 mA - 16 h

With high loads: 1,250 mA - 1.2 h

II-260-01

Container





INSTRUMENTE

POWER TOOLS Accessoires

Chargers For 1 battery



DD-231-14
230 Volt

DD-231-15
110 Volt

For 2 batteries



DD-231-16
230 Volt

DD-231-17
110 Volt

Technical Data for chargers:

Rated Voltage: 230 V/110 V
Rated frequency: 50 Hz
Rated input: 14 VA
Rated output (volt): 12 V
Rated output (curr): 1,100 mA max.
Protection class: II
Protection type as per
DIN EN 529: IXPO

POWER TOOLS
Attachments and Accessoires

DD-231-30

Concentric Jacob chuck for round and triangular shanks up to $\varnothing 7.0$ mm with key



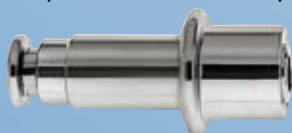
DD-231-42

Quick-action chuck for drill wires from $\varnothing 0.8$ mm up to $\varnothing 3.0$ mm



DD-231-62

Adapter for AO and Aesculap® attachments



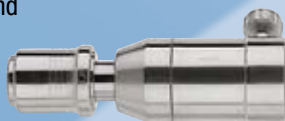
DD-231-64

Adapter for DIN attachments



DD-038-34

Chuck for acetabular and intramedullary reaming (100 r/min.)



DD-038-36

Oscillating saw standard connection for saw AO



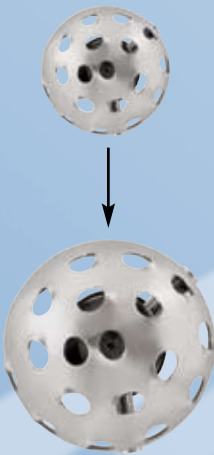


ACETABULUM Acetabulum Reamer System

The reamer heads are coupled with shafts without a key.
Only one shaft is necessary for the system.



Reamers with quick locking device



DD-237-40	ø 40 mm
DD-237-42	ø 42 mm
DD-237-44	ø 44 mm
DD-237-46	ø 46 mm
DD-237-48	ø 48 mm
DD-237-50	ø 50 mm
DD-237-52	ø 52 mm
DD-237-54	ø 54 mm
DD-237-56	ø 56 mm
DD-237-58	ø 58 mm
DD-237-60	ø 60 mm
DD-237-62	ø 62 mm
DD-237-64	ø 64 mm

DD-237-70

Shaft A0 Connector for Acetabulum Reamer System

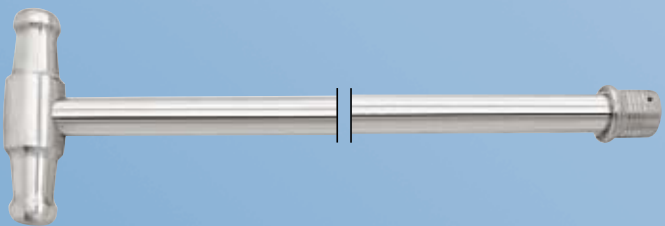


DD-237-71 (without ill.)

Shaft Harris Connector for Acetabulum Reamer System

DD-237.72

T-Handle for Acetabulum Reamer System



SURGICAL SAW BLADES

Synthes / AO **SODEM**

	Depth	Width	Material Thickness	Cutting Thickness
--	-------	-------	--------------------	-------------------



DD-039-00

mm	90.0	19.05	1.27	1.37
----	------	-------	------	------

inch	3.60	0.75	0.050	0.054
------	------	------	-------	-------



DD-039-02

mm	90.0	25.4	1.47	1.47
----	------	------	------	------

inch	3.60	1.00	0.058	0.058
------	------	------	-------	-------



DD-039-04

mm	90.0	25.4	1.19	1.19
----	------	------	------	------

inch	3.60	1.00	0.047	0.047
------	------	------	-------	-------



DD-039-06

mm	90.0	25.4	0.89	1.00
----	------	------	------	------

inch	3.60	1.00	0.035	0.039
------	------	------	-------	-------



DD-039-08

mm	90.0	25.4	1.00	1.00
----	------	------	------	------

inch	3.60	1.00	0.039	0.039
------	------	------	-------	-------



DD-039-10

mm	27.0	6.0	0.4	0.6
----	------	-----	-----	-----

inch	1.06	0.24	0.016	0.024
------	------	------	-------	-------



Im Gänsäcker 56
78532 Tuttlingen
Germany

Tel. +49 7462 20420-70
Fax. +49 7462 20420-62
info@cm-instrumente.de
www.cm-instrumente.de







We reserve the right of technical modifications.

© CM Instrumente GmbH Printed in Germany



INSTRUMENTE

SURGICAL SAW BLADES Synthes / AO SODEM

	Depth	Width	Material Thickness	Cutting Thickness
				
DD-039-12				
mm	23.0	14.0	0.4	0.58
inch	0.91	0.55	0.016	0.023
				
DD-039-14				
mm	48.0	14.0	0.4	0.66
inch	1.89	0.55	0.016	0.026
				
DD-039-16				
mm	48.0	27.0	0.4	0.66
inch	1.89	1.06	0.016	0.026
				
DD-039-18				
mm	68.0	27.0	0.6	0.81
inch	2.68	1.06	0.024	0.032
				
DD-039-20				
mm	90.0	13.0	1.27	1.37
inch	3.60	0.50	0.050	0.054
				
DD-039-22				
mm	90.0	13.0	0.89	1.00
inch	3.60	0.50	0.035	0.039